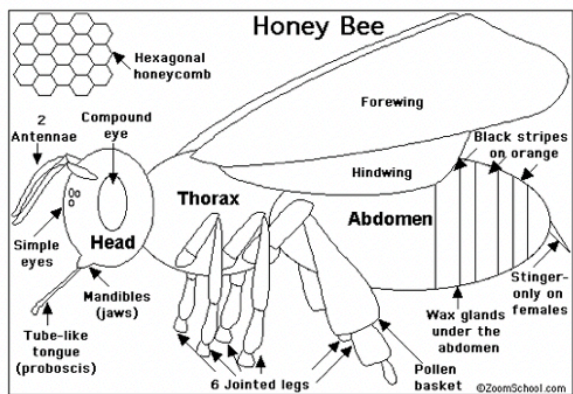


Spring Term - Bees Knees

Honeybees are social insects that have

- *six legs,
- *a three-part body,
- *a pair of antennae,
- *compound eyes,
- *jointed legs,
- *a hard exoskeleton.

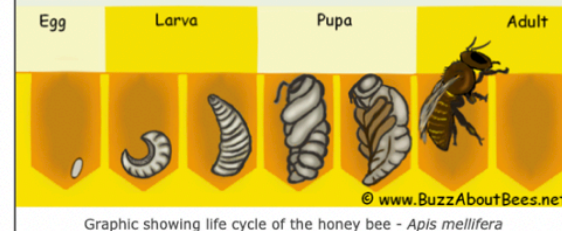


What should I already know?

The life cycle of animals including humans.

That climate change is affecting animals and their habitats. More than 1 million species of animals and insects face extinction. Pollution is harmful to the environment. Global temperatures are having a massive effect on planet earth.

The Lifecycle Of The Honey Bee

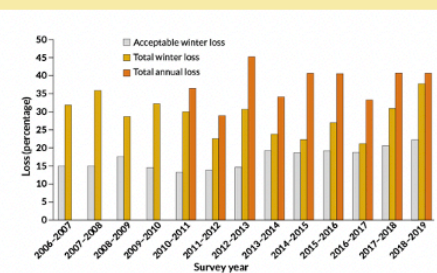


Vocabulary	Meaning
Anther	The part of the stamen that produces pollen.
Apiary	The location of a number of bee colonies
Apiculture	The science of bees and beekeeping
Beeswax	Wax produced by honey bees and used to build a comb.
Brood	All stages of immature honey bees, eggs, larvae and pupae.
Colony	Honey bees are social insects and <u>live in</u> large groups. Each colony contains one queen bee.
Cell	A single hexagonal wax compartment.
Comb	The wax structure made of hexagonal cells.
Drone	A male honey bee who fertilises the queen
Hive	Any container provided by humans for honey bees to nest.
Honeydew	Plant sap excreted by insects and collected by bees
Pollen	Fine dust-like substance found on flowering plants.
Swarm	When the queen and half the workers leave the nest

Knowledge Facts

- Pesticides may be responsible for the reduction of the honey bee population.
- Bees pollinate around one-third of food crops and 90 per cent of wild plants.
- Many species of bee are on the brink of extinction in parts of the UK – and some types have been lost entirely.
- Honeybee hives are regularly traded locally and internationally allowing the rapid spread of diseases and parasites.

Honey Bee Colony losses



Websites to Research

- <https://www.natgeokids.com/uk/discover/animals/insects/honey-bees/>
- <https://www.coolkidfacts.com/bee-facts/>

Fun Pest and Bug Games

- <https://pestworldforkids.org/fun-games/games/>