



Dear Parents/Carers,

We have reached another Friday already and life at Penpol has been busier and livelier than ever. Thank you all for your continued support and collaboration. I can safely report that your children are settling fantastically back into school life and it is an enormous privilege to see so much fun, learning and exploration going on.

COVID-19 Symptoms

There are already several seasonal colds doing the rounds and this has prompted much uncertainty around COVID-19 symptoms. The potential COVID-19 symptoms to look out for are:

- A new continuous cough (coughing a lot for more than an hour or three or more coughing episodes across 24 hours)
- A loss or change to sense of smell or taste
- A high temperature

Although these symptoms may be the result of another condition, it is **important that each member of the household remains at home** and **a test is sought**. If you and members of your household have not had one of these specific symptoms and your child is otherwise well, they do not need a test and are able to come to school. **We have attached a flowchart below to help you with this.**

Testing

There are significant challenges in the testing system at present. If you need to seek a test, it is important that you do so as quickly as possible. 8am and 10am are good times to do this using the following website: <https://self-referral.test-for-coronavirus.service.gov.uk/antigen/name>. If you are not successful, please email the following address for further support: d-ccg.cornwalldevon.urgenttesting@nhs.net. If you are not able to access a test following this, please email me at head@penpol.cornwall.sch.uk or ring us on 01736753472 so that we can support you to access a test in the five day window required. More information about this is found in the attached letter from Rachel Wigglesworth, interim Director of Public Health.

Remote Learning

If your child finds themselves isolating and is well enough to engage with some school learning, please do get in touch and we can support with this. We have also made our archived summer term remote learning pages available here: <https://www.penpolschool.co.uk/remote-learning/>

Parking

As a part of our Park and Stride plans, we have secured an additional allocation of parking permits for the Foundry Square carpark. If you are in real need of one of these permits, please contact the school office. They will be distributed on a first come, first serve basis as soon as we receive them. In the meantime, if you need to drive, please continue to park safely and away from the school site.



Morning Routines

Thank you all for continuing to work with our morning drop-off systems. This is now working more smoothly than ever. Please remember not to arrive at school before 8:45 to avoid a dangerous build-up of pedestrians. **Children in all year groups can arrive at any time between 8:45am and 9:05am.**

Outdoor Learning

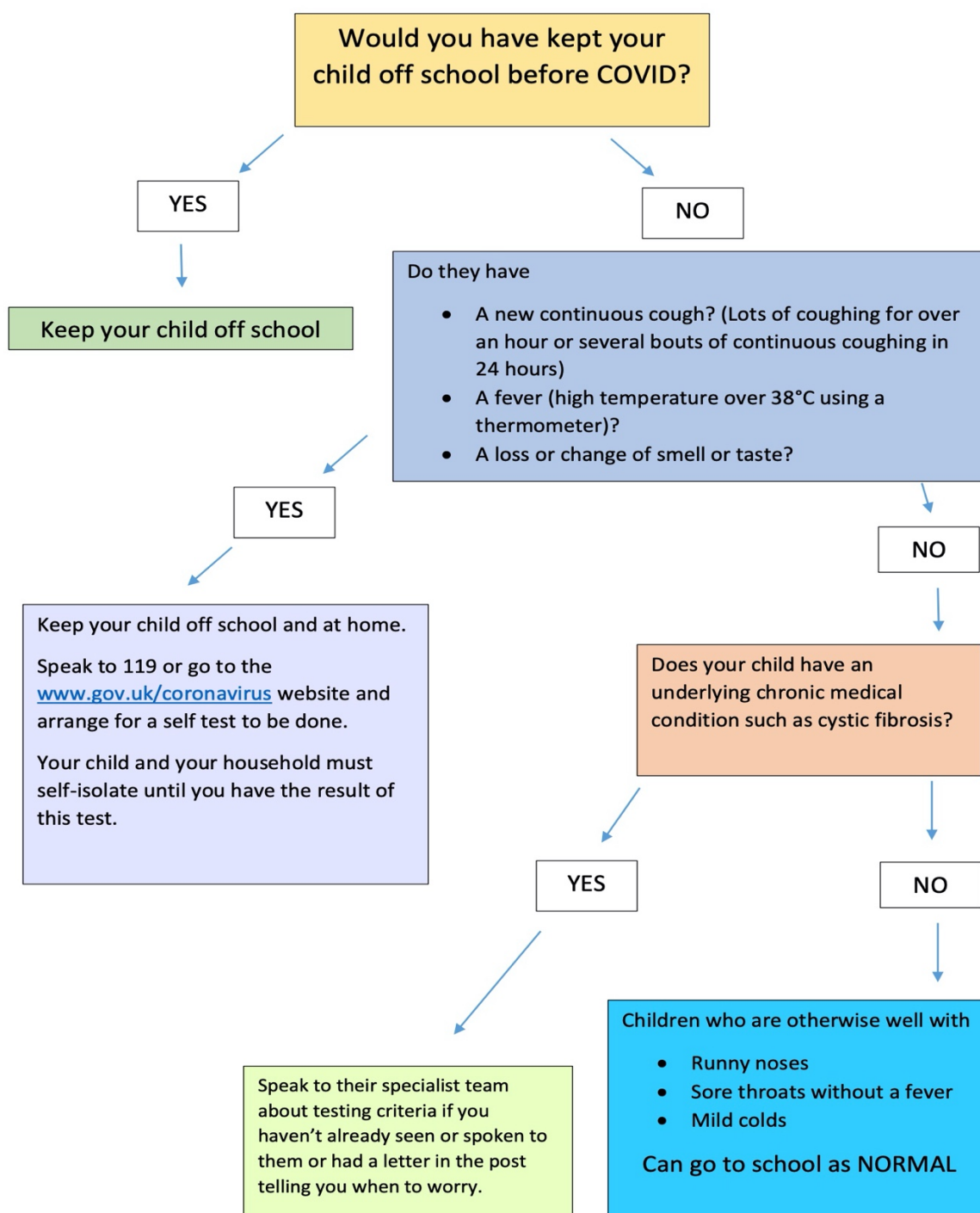
We are learning outdoors more than ever at Penpol and this is having such a positive impact upon the way we learn. Have a look at what we've been up to below. Please do keep an eye on the forecast each day so that your child is ready to enjoy their learning whatever the weather throws at us!

Our Reception classes are on the lookout for any large construction resources.

Please do get in touch if you are able to make any donations of items such as milk crates, wooden planks, decking boards, cable reels, guttering, pipes and tyres.



Please use this flowchart to help if your child is unwell



Very best wishes,

Chris Chislett
Headteacher
head@penpol.cornwall.sch.uk

Headteacher: Mr C Coyle-Chislett Phone: 01736 753472 Email: secretary@penpol.cornwall.sch.uk Online: penpolschool.co.uk